

YOUR HOME AT YOUR TOUCH

## LIVING ROOM



## KITCHEN



WiFi



Wireless



Light Control



Motion Detection



Temp & Humi Sensor



Light Intensity



Security Control



Application Control



Battery



Intelligent Linkage



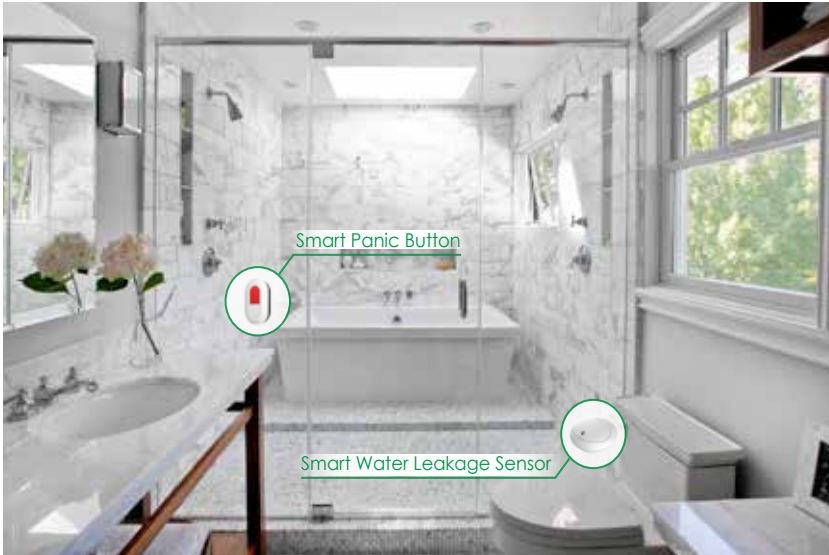
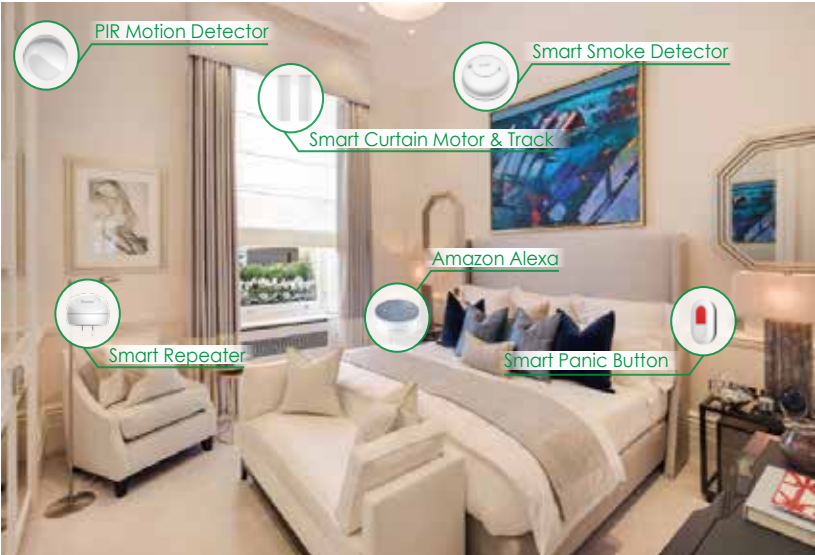
Application Alarm



Smoke Sensor

## BED ROOM

## WASHROOM



Application Notification



Open/Close Valve



Loud Alarm



SOS



Easy Installation



Curtain Open/Close



Door Lock



Device Control



Appliance Control



Full Control



Signal Enforced



AC Control

# About Us

Zenith Smart Home, control your light, security, environmental conditioning, home appliance remotely and with your mobile. Giving consumers unprecedented power to enhance home security, optimize living environments, and improve life quality. Zenith is making a progressive effort to explore more in the sphere of leading Smart Home technologies and share the fantasies of smart living!

Zenith Group is consist of many well-reputed companies, including:

## **JAHEDPARI TRADING CO LLC**

- Security Surveillance and Computer Hardware Trading
- Software Developing and Trading



## ZENITH TECHNOLOGY

- Home Automation
- Security Surveillance and Computer Hardware Trading

## ZENITH REAL ESTATE DEVELOPMENT

- Property Investment & Real Estate Business

## ZENITH SMART DEVELOPMENT

- Developing, Joint venturing & Funds providing

## ZENITH SMART CONTRACTING

- Building Constructing

## ZENITH GROUP TECHNICAL SERVICE

- Technical construction solution & Interior works

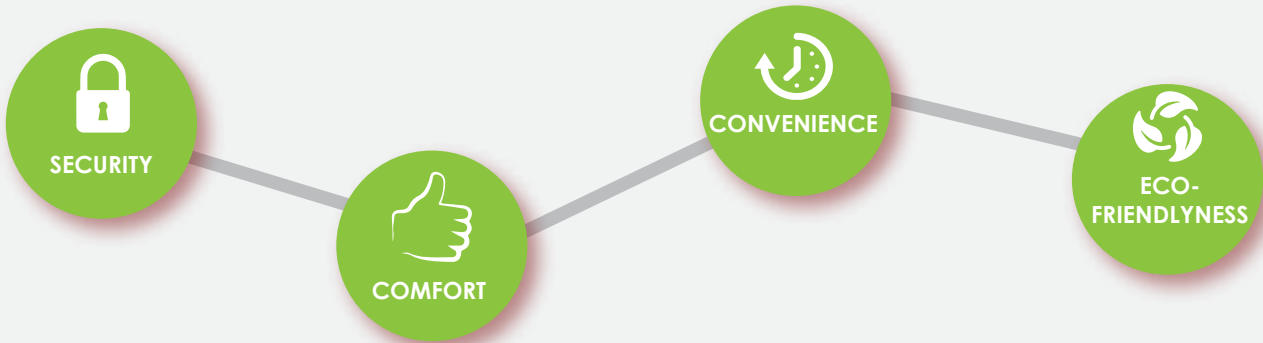
## TOP ZENITH BUILDING MATERIALS TRADING

- Construction building material procuring





DESIGN DIGITAL  
 ELECTRIC TECHNOLOGY  
 AUTOMATION ENERGY  
 HOUSE NETWORK  
 COMMUNICATION EQUIPMENT WIRELESS  
 SMART HOME  
 MOBILE CONCEPT COMPUTER ELECTRICITY  
 APPLIANCES TABLET SECURITY POWER INNOVATION  
 LIGHT  
 MODERN MONITORING SYSTEM  
 ENVIRONMENT BATTERY





# Gateway



WiFi



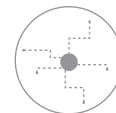
Home Control



Light Control



Security Control



Network Control

## Overview

- Realize linkage control by custom scene according to actual needs.
- Multiple access methods; Create a WiFi to control devices.
- Enterprise Security for Residential and Industrial
- Anti-interference, suitable for large area network.

## Specifications:

**Power Parameter:** DC 5V 1A, AC/DC Adaptor

**Overall Power Consumption:**  $\leq 3.5$

**Communication Distance:** 500m (visible)

### Wired Access Mode:

10/100M Auto-negotiation Ethernet WAN/LAN interface

**Wireless Access Mode:** WiFi

**Memory Type & Capacity:** DDR2 & 64MB

**Installation Method:** Mobile Type



# Door Lock



Finger  
Print



Password



Key



Application  
Control



Battery

## Specifications:

**Power Parameter:** DC 6V

**Power Supply:** 8\*AA Battery (4 for backup)

**Standby Current:** <math>< 45\mu A</math>

**MaximunNumber Of Fingerprints:** 99

**Password Capacity:** One Set

**Emergency Power Supply:** 9V Laminated Cell

**Unlocking Mode:**

Key, Password, Fingerprint, Application



## Overview

- Multiple unlocking method: smartphone, password & finger print.
- Control different scenes like door open, door close, leave home.
- Ultra-low power consumption, long endurance.
- Intuitive use and easy installation.



## Overview

- It is a hybrid of traditional door peephole and smart camera.
- Shows visit info and video on smart phone to check who is coming.
- Take video recording when unknown people approach within 2 mtr.
- Once receiving visiting info, users can choose video talk or voice intercom.

# Door Bell Camera



Camera Resolution



Application Control



Battery



Security Control



Mic

## Specifications:

**Power Parameter:** DC 4.2V

**Power Supply:** Lithium Battery

**Standby Current:** < 333 $\mu$ A

**Networking Mode:** WiFi

**Image Quality:** 720P

**Detecting Range:**  
Sector Domain (3m in front of the probe)

**Infrared Night Vision:** Support

**Installation Method:**

Fixed by Screw or 3m Rubber

# Motion Sensor



Device  
Linkage



Application  
Control



Angle



Security  
Control



Motion  
Detect

## Specifications:

**Power Parameter:** DC 3V

**Detection Speed:** 0.2 ~ 3.5m/s

**Installation Height:** 2-4m

**Detection Sensitivity:** One-shot

**Detection Angle:**

Ellipse with a Major Axis of 4m  
and a Minor Axis of 3.5m

**Standby Current:**  $\leq 15\mu\text{A}$

**Material & Color:** PC, White

**Battery Type:** CR2 battery\*1



## Overview

- Alarm in time at the detection of moving objects.
- Link with other security devices for multiple defenses.
- Quick notification sent to phone at the same time.
- Free adjustment of detecting range.



## Overview

- Support group linkage and defense with security devices.
- Detect light intensity, movement of object & temperature change.
- If detect quick notification sent to phone at the same time.
- Low power consumption, energy saving.

# Multi Sensor



Motion  
Detection



Temperature &  
Humidity



Light  
Intensity



Security  
Control



Application  
Control

## Specifications:

**Power Parameter:** DC 3V

**Standby Current:** 53 $\mu$ A

**Detection Sensitivity:** One-shot

**Detection Angle:** Circumference with a  
Radius of 3m when the Height is 2.4m

**Working Temperature/Humidity:**  
-10°C~+45°C/≤95%RH (noncondensing)

**Installation Method:** Base-fixed

**Material & Color:** PC, White

**Installation Height Range:** 2.3~6m

# Contact Sensor



Device  
Linkage



Door  
Control



Security  
Control



Battery

## Specifications:

**Power Parameter:** DC 3V

**Standby Current:** 4 $\mu$ A

**Door Opening/Closing Current:**

1.2 $\mu$ A at Opening, 4 $\mu$ A at Closing

**Alarm Distance:** 20mm

**Battery Type:** CR2 battery\*1

**Installation Method:** Fixed by Screws

**Material & Color:** PC, White

**Working Temperature/Humidity:**

-10°C~+45°C/≤95%RH (noncondensing)



## Overview

- Once door opens quickly get notification on your smart phone.
- Can be Link with other security devices.
- Can be used as a trigger device to turn on lights, music and so on.
- Alarm in wireless way, strong anti-interference ability.



## Overview

- Detect gas leakage: Applies to kitchen, bathroom where needs gas.
- Strong anti-interference ability, automatic adjustment of sensitivity.
- If detect quick notification sent to phone at the same time.
- Can be Link with other smart devices.

# Gas Sensor



Intelligent Linkage



Gas Detection



Intelligent Processing



App Alarm

## Specifications:

**Power Parameter:** 100-240V AC, 50/60Hz

**Maximum Power Consumption:** <5W

**Standby Power Consumption:** <3W

**Alarm Concentration:** 9%LEL±1%

**Detecting Gas Type:** Natural Gas, Liquefied Gas

**Detecting Mode:** Catalyst Combustion Type Sensor

**Communication Distance:**

300m (depend on specific environmental conditions)

**Installation Method:**

Ceiling-mounted Type, Wall-hanging Type

# Smoke Sensor



Intelligent  
Linkage



Battery



Smoke  
Detection



App  
Alarm

## Specifications:

**Power Parameter:** DC 9V

**Power Supply:** Alkaline battery\*1

**Quiescent Current:**  $\leq 1.5 \mu A$

**Alarm Current:** Max. 40mA

**Installation Method:** Mobile Type

**Working Temperature/Humidity:**

-10°C~+45°C/≤95%RH (noncondensing)

**Material & Color:** PC, White



## Overview

- Notification on smart phone when smoke concentration exceeds.
- Can be link with multiple security devices for quick response.
- Easy for onsite testing.
- Alarm in wireless way, strong anti-interference ability.



## Overview

- Quickly send notification on smart phone when it turns on/off.
- Work with gas leakage sensor to turn on/off the valve.
- Accurate control with manual calibration function.
- Alarm in wireless way, strong anti-interference ability.

# Valve Modifier



Open/Close Valve



Application Control



Intelligent Linkage



Battery

## Specifications:

**Power Parameter:** 6V (4\*AA Battery);  
DC 5V 1A (AC/DC Adapter)

**Standby Power Consumption:** 8.3μA

**Working Current:** 330mA

**Torque:** 35kg·cm

**Material & Color:** PC, White

**Installation Method:** In the gas pipe



# Sound Warner



Intelligent  
Linkage



App  
Alarm



Loud  
Alarm



Battery

## Specifications:

**Power Parameter:** 100-240V AC, 50/60Hz

**Standby Power Consumption:**  $\leq 0.3W/2W$

**Alarm Decibel:**  $\geq 85dB@1m$

**Material & Color:** PC, White

**Working Temperature/Humidity:**

$-10^{\circ}C \sim +45^{\circ}C / \leq 95\%RH$  (noncondensing)

**Installation Method:** Base-fixed



## Overview

- Alarm through wireless transmission, quick response.
- Linkage with multiple detectors.
- Realize local alarm.
- Quick notification sent to phone at the same time.



### Overview

- Provide variety of ringtones to select.
- Linkage with doorbell button to notify at smart phone.
- Easy to install and operate.
- Quick notification sent to phone at the same time.

# Door Bell



Intelligent  
Linkage



App  
Notification



Loud  
Sound



Battery

### Specifications:

**Power Parameter:** 100-240V AC, 50/60 Hz

**Standby Power Consumption:** ≤0.6W

**Max Power Consumption:** 2W

**Alarm Decibel:** Adjustable

**Material & Color:** PC, White

### Installation Method:

Ceiling-mounted Type, Wall-hanging Type

### Working Temperature/Humidity:

-10oC~+45oC/≤95%RH (noncondensing)

# Panic Button



SOS



No  
Installation



Thin &  
Light



Super Low  
Power



Anti-UV  
Enclosure

## Specifications:

**Power Parameter:** DC 3V, CR2450\*1

**Standby Current:**  $\leq 0.5\mu\text{A}$

**Installation Method:**

Wall-hanging Type, Portable Type

**Working Temperature & Humidity:**

$-10^{\circ}\text{C}\sim+45^{\circ}\text{C}/\leq 95\%\text{RH}$  (noncondensing)



## Overview

- Support emergency alarm and remote push notification.
- Widely applies to Smart Elder Care and Children Guardian.
- Quick notification sent to phone at the same time.
- Small size, no wiring, portable.



### Overview

- Visit information will be pushed to smart phone.
- Can be used with door bell and controlled remotely.
- Quick notification sent to phone at the same time.
- Small size, no wiring, portable.

# Door Bell Button



Device  
Linkage



App  
Notification



Battery



Easy  
Installation

### Specifications:

**Power Parameter:** DC 3V, CR2450\*1

**Standby Current:**  $\leq 0.5\mu\text{A}$

**Installation Method:**

Wall-hanging Type, Portable Type

**Material & Color:** PC+ABS, White

**Working Temperature/Humidity:**

$-10^{\circ}\text{C}\sim+45^{\circ}\text{C}/\leq 95\% \text{RH}$  (noncondensing)

# Temperature Sensor



App  
Control



Device  
Linkage



Super Low  
Power



Anti-UV  
Enclosure

## Specifications:

**Power Parameter:** DC 3V, CR2\*1

**Standby Current:**  $< 2\mu\text{A}$

**Detection Power Consumption:**  $< 10\text{mA}$

**Installation Method:** Base-fixed

**Communication Distance:**

100m (according to environmental conditions)

**Measuring Temperature Range/Precision:**

$(-10^{\circ}\text{C}\sim 0^{\circ}\text{C} / \pm 1^{\circ}\text{C})$   $(0^{\circ}\text{C}\sim 60^{\circ}\text{C} / \pm 0.5^{\circ}\text{C})$   $(60^{\circ}\text{C}\sim 70^{\circ}\text{C} / \pm 1^{\circ}\text{C})$

**Measuring Humidity Range/Precision:**

$5\%\sim 95\%\text{RH} / \pm 4.5$



## Overview

- Detect temperature & humidity indoors.
- Linkage with other devices to control environment temperature.
- Quick notification sent to phone at the same time.
- Low power consumption, energy saving.



## Overview

- Real-time detect indoor light intensity.
- Low power consumption, energy saving.
- Group linkage with relevant devices to realize scene control.
- Inform through application at same time.

# Light Sensor



Device  
Linkage



Light  
Control



Battery



Application  
Control

## Specifications:

**Power Parameter:** DC 3V, CR2\*1

**Standby Current:**  $< 2\mu\text{A}$

**Communication Distance:**  
100m (depend on specific  
environmental conditions)

**Anti-visible Light:**  $\geq 8000\text{LUX}$

**Light Range:** 1-65535 lx

**Effective Light Receiving Angle:**  
 $\pm 60^\circ$

# Water Leakage Sensor



Application  
Control



Plug & Play



Device  
Linkage



Anti-UV  
Enclosure

## Specifications:

**Power Parameter:** DC 3V

**Standby Current:**  $\leq 2\mu\text{A}$

**Power Supply:** CR2 battery\*1

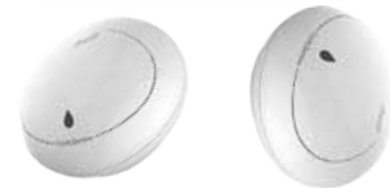
**Water Height:**  $\geq 1\text{mm}$

**Material & Color:** PC, White

**Working Temperature/Humidity:**

$-10^{\circ}\text{C}\sim+45^{\circ}\text{C}/\leq 95\%\text{RH}$  (noncondensing)

**Installation Method:** Mobile Type



## Overview

- Detect indoor water leakage and timely alarm.
- Linkage with smart water valve to take timely measures.
- Equipped with high-sensitive water contact probe.
- Notify through application at same time.



## Overview

- Expand ZigBee signal coverage
- Stable signal transmission.
- Extend gateway communication coverage.
- Direct plug-in power supply, space-saving.

# Zigbee Repeater



Signal  
Enforced



Battery



Anti-UV  
Enclosure



Plug & Play

## Specifications:

**Power Parameter:** 100-240V AC, 50/60Hz

**Standby Power Consumption:**  $\leq 0.5W$

**Wireless Communication Distance:**

500m (visible)

**Material & Color:** PC, White

**Installation Method:** Portable Type

**Working Temperature/Humidity:**

$-10^{\circ}C \sim +45^{\circ}C / \leq 95\%RH$  (noncondensing)



# Touch Switch



Application  
Control



Easy  
Installation



Device  
Linkage



Light  
Control

## Specifications:

**Power Parameter:** 100-240V AC, 50/60Hz

**Standby Power Consumption:**  $\leq 0.03W$

**Installation Method:** Wall-mounted Type

**Maximum Resistance Load of Total Lines:**

2000W/1000W (rated voltage of 220V/110V)

**Maximum Inductive & Capacitive Load**

**of Total Lines:** 1400W/600W

**Material & Color:** Tempering Glass, White



## Overview

- Control lighting (L) and supports time setting/linkage through App.
- Linkage with other devices to realize movement for lights on/off.
- It is safer to operate through glass even by wet hand with it touch.
- Support time setting.



## Overview

- Control lighting (L) and supports time setting/linkage through App.
- Device linkage to make different light scenes with multiple lights.
- It is safer to operate through glass even by wet hand with it touch.
- Support time setting.

# Touch Binding Switch



Multiple Light Control



Device Linkage



Easy Installation



Application Control

## Specifications:

**Power Parameter:** 100-240V AC,50/60Hz

**Standby Power Consumption:**  $\leq 0.5W$

**Material & Color:** Tempering Glass, White

**Flame Retardant Rating:** UL94 V-0

# Touch Dimmer Switch



Application Control



Easy Installation



Security Control



Light Control

## Specifications:

**Power Parameter:** 100-240V AC, 50/60Hz

**Minimum Load:** 25W

**Maximum Resistance Load:** 300W

**Material & Color:** Tempering Glass, White

**Installation Method:** Wall-mounted Type

**Type:** One-Gang, L, Touch, Dimmer

**Working Temperature/Humidity:**

-10°C~+45°C/≤95%RH (noncondensing)



## Overview

- Can be controlled by App to adjust light intensity.
- Linkage with other devices to realize movement for lights on/off.
- Can be controlled by App to adjust light intensity.
- Scene, regional management, customization mode by a press.



## Overview

- Control lighting (L) and supports time setting/linkage through App.
- Linkage with other devices to realize movement for lights on/off.
- Metallic cover, easy to fit into different decoration styles.
- Scene, regional management, customization mode by a press.

# Metallic Switch



Easy  
Installation



Application  
Control



Device  
Linkage



Light  
Control

## Specifications:

**Power Parameter:** 100-240 AC, 50/60Hz

**Standby Power Consumption:**  $\leq 0.05W$

**Maximum Resistance Load:**

1000W (rated voltage value of 110V)

**Maximum Inductive & Capacitive**

**Load of Total Lines:**

600W (rated voltage of 110V)

**Material & Color:** PC + Al, White + Silver

**Flame Retardant Rating:** UL94 V-0

# Embedded Switch



Application  
Control



Home  
Appliances



Device  
Linkage



Light Switch  
Control

## Specifications:

**Power Parameter:** 100-250V AC, 50/60Hz

**Standby Power Consumption:**  $\leq 0.75W$

**Type:** Embedded Switch (8A)

**Rated Current:** 8A

**Maximum Resistance Load of Total Lines:**  
1760W (rated voltage of 220V)

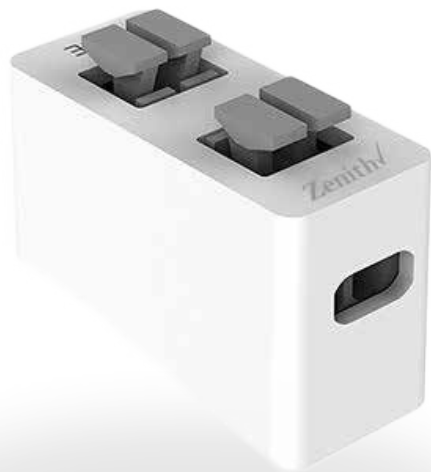
**Maximum Inductive & Capacitive Load of  
Total Lines:** 1000W (rated voltage of 220V)

**Installation Method:** Wall-mounted Type



## Overview

- Keep the existed switch and transform into smart ones.
- Transfer normal switch into smart lighting and linkage control.
- Link with scene and binding switch to achieve circuit transform.
- Easy to make existing switch smart.



## Overview

- To improve lighting of small power lighting load.
- Easy to install.
- Unique current enhancement technology.
- Small size unique design.

# Load Amplifier



Load  
Control



Easy  
Installation



Battery



Thin &  
Light

## Specifications:

**Power Parameter:** 110~240V AC, 50/60Hz

**Working Temperature/Humidity:**

-10oC~+45oC/≤95%RH (noncondensing)

**Material & Color:** PC, White

**Installation Method:** Wall-mounted Type

# Breaker



Appliance  
Control



Device  
Control



Easy  
Installation



Application  
Control

## Specifications:

**Power Parameter:** 100-240V AC, 50/60Hz

**Standby Power Consumption:**  $\leq 0.5W$

**Rated Current:** 32A

**Installation Method:** Guide Rail

**Working Temperature/Humidity:**

$-10^{\circ}C \sim +45^{\circ}C / \leq 95\%RH$  (noncondensing)

**Material & Color:** PC, White



## Overview

- More advance algorithm for peak hour power detection.
- User-friendly operation like time setting, scene management.
- Control home appliances smartly.
- Users can turn off family power consumption remotely via App.



## IR Transmitter



Device  
Linkage



Appliance  
Control



Battery



Application  
Control

### Overview

- Support time setting/linkage control/scene management.
- Control home appliances smartly through application.
- Support remote control.
- Fully control your appliances through smart phone.

### Specifications:

**Power Parameter:** DC, 3V

**Standby Power Consumption:** 7 $\mu$ A

**IR Control Distance:** 5m-7m

**IR Control Angle:** 45°

**Material & Color:** PC+ABS, White

**Flame Retardant Rating:** UL94 V-2



# Thermostat



AC  
Control



Application  
Control



Plug &  
Play



Device  
Linkage

## Specifications:

### Power Parameter:

AC 24V 50-60Hz or 2\*AAA  
battery (1.5V)

**Standby Current:** < 60mA

### Communication Distance:

Max. 100m in open area

### Range of Temperature Control:

50°C~90°C/10°C~32°C

**Sensor Precision:** ±1°C

### Installation Method:

Wall-mounted Type

**Material & Color:** PC, Black



## Overview

- Replace traditional temperature control to scene management.
- Touch Control.
- Support near field wake-up of the operation screen.
- Fully control through smart phone.



## Overview

- It can realize local/remote check and control.
- Open/close the curtain by a touch on the switch panel or via App.
- Link with other devices for scene management.
- Support time setting and linkage control to bring convenience.

# Touch Curtain Switch



Application Control



Curtain Open/Close



Easy Installation



Device Linkage

## Specifications:

**Power Parameter:** 100-240V AC, 50/60Hz

**Load Type:** AC Curtain Motor

**Motor Power:** 125W, 50/60Hz

**Material & Color:**

Tempering Glass, White

**Working Temperature/Humidity:**

-10°C~+45°C/≤95%RH (noncondensing)

# Curtain Motor



Device  
Linkage



Application  
Control



Strong  
Power



Low  
Noise

## Specifications:

### Power Parameter:

AC 220V±10%, 50/60Hz

### Standby Power

Consumption: ≤0.1W

Input Power: 75W

Rotate Speed: 112r/min

Material & Color: PC, White

Rated Current: 0.34A

Installation Method:

Clamping Hold



## Overview

- Supports remote/linkage control, time/scene management.
- Open/close the curtain by a touch on the switch panel or via App.
- Design of noiseless; Stop when facing with obstacles.
- Keep the traditional operation method.



## Overview

- Support remote controlling the socket power.
- Supply or cut off power remotely via smart phone to save energy.
- Supports customized scene modes/linkage control with other devices.
- Overload protection, safe for use.

# Wall Socket



Device  
Linkage



Power  
Statistics



Easy  
Installation



Application  
Control

## Specifications:

**Power Parameter:**

250V AC, 50/60Hz

**Rated Current:** 13A

**Material & Color:** PC, White

**Maximum Resistance Load:** 2500W

**Maximum Inductive & Capacitive Load:** 1500W

**Installation Method:**

Wall-mounted Type

# Wall Plug



Device  
Linkage



Application  
Control



Free  
Installation



Power  
Statistics



## Specifications:

**Power Parameter:** 250V AC, 50/60Hz

**Maximum Rated Current:** 13A

**Standby Power Consumption:**  $\leq 0.5W$

**Material & Color:** PC, White

**Maximum Resistance Load:** 2500W

**Maximum Inductive & Capacitive Load:**  
1500W

**Installation Method:** Portable Type

**Working Temperature/Humidity:**

$-10^{\circ}C \sim +45^{\circ}C / \leq 95\%RH$  (noncondensing)

## Overview

- Remote controlling the socket power.
- Supply or cut off power remotely via smart phone to save energy.
- Get real-time data of power consumption.
- Support customized scene modes and linkage control.



# Water Valve



Open/Close Valve



Application Control



Intelligent Linkage



Battery

## Overview

- Control the water-use in the kitchen and bathroom.
- Remotely turn on/off water valve and set working time.
- Linkage with other devices.
- Can be used in irrigation system in the garden.

## Specifications:

**Power Parameter:** 6V (AA battery\*4)

**Standby Current:** <math>40\mu\text{A}</math>

**Water Pressure:** 0.02~0.8Mpa

**Water Flow:** 0.02Mpa $\geq$ 3L/min; 0.1 Mpa $\geq$ 12L/min; 0.8Mpa $\geq$ 32L/min

**Material & Color:** PC+ABS, Gray

**Installation Method:**  
Floor-Mounted Type

# Scenario Switch



Device Linkage



No Installation



Full Control



Super Low Power



Anti-UV Enclosure

## Specifications:

**Power Parameter:** DC 3V

**Standby Current:**  $< 3\mu\text{A}$

**Power Supply:** CR2450\*2, Button Battery

**Bandwidth:** 2.405~2.480GHz

**Communication Distance:** 100m (depend on specific environmental conditions)

**Material & Color:** PC+ABS, Pearl White

**Installation Method:**

Wall-mounted Type, Portable Type



## Overview

- User can switch different customized scenes without phone.
- Can bind several devices on single touch with different scenes.
- Can be installed wireless in standard cassette.
- Switch different customized scenes with single touch.



## Overview

- Control multiple devices at with a single voice command.
- Play your favorite playlist with just a voice command.
- Know about weather, news and many more just by asking.
- Can't get bored when you have Amazon Alexa.

# Amazon Alexa



Device Control



Music



Weather



Appliance Control



Plug & Play

## Specifications:

### Wi-Fi connectivity:

Dual-band Wi-Fi supports 802.11 a/b/g/n

### Bluetooth connectivity:

Advanced Audio Distribution Profile (A2DP) support  
Audio/Video Remote Control Profile (AVRCP)

**Audio:** Built-in speaker & 3.5 mm stereo audio output for use

### System Requirements:

Echo Dot comes ready to connect to your Wi-Fi.

**Material & Color:** PC, White





# Application

Control your Appliances, Network and Security System through Zenith Smart Home Application.



Available on the  
**App Store**



Get it on  
**Google play**



## INFORMATION



---

### CONTACT US:



+971527199542



info@zenithsmart.com



www.zenithsmart.com



/SmartHomeInfo



/SmartHomeInfo



Shop 71, Building Material Mall, Warsan 3, Dubai, UAE